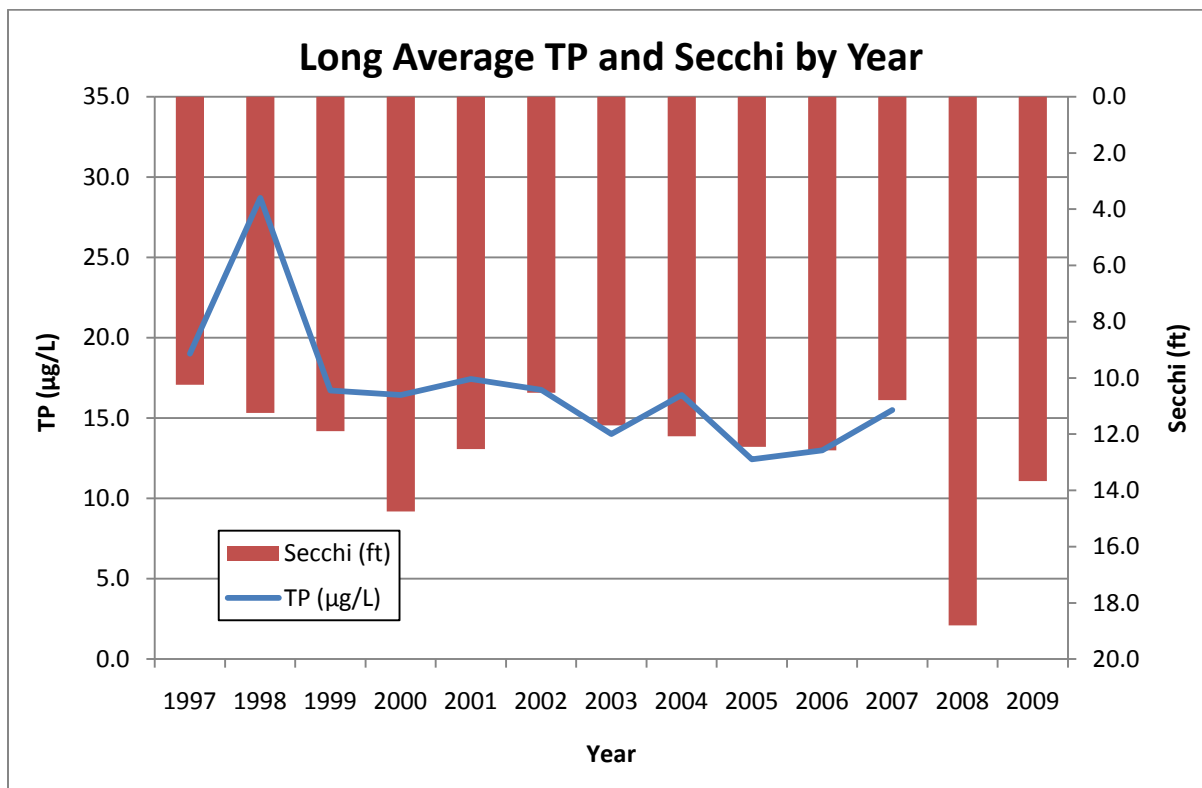


## Long Water Quality Data 1997-2009



### Long Annual Averages

Year	Secchi (ft)	TP (µg/L)	OP (µg/L)	Chl-a (µg/L)
1995	11.7			
1996	9.5			
1997	10.2	19.0	9.9	2.8
1998	11.3	28.7	28.0	
1999	11.9	16.7	2.0	
2000	14.8	16.4	4.2	4.2
2001	12.5	17.4	5.3	
2002	10.5	16.8	6.6	
2003	11.7	14.0	3.0	
2004	12.1	16.4	5.9	
2005	12.5	12.4	2.7	
2006	12.6	13.0	8.3	
2007	10.8	15.5	7.0	5.5
2008	18.8			
2009	13.7	12.6	5.3	6.0